

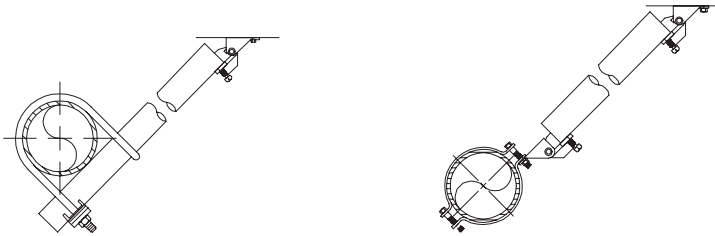
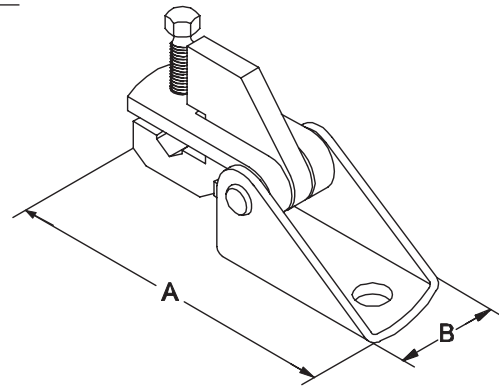


Universal Swivel Sway Brace Attachment

980

Technical Features

- **Sizes available for bracing pipe (Nominal) :** DN25/1", DN32/1 1/4", DN42/1 1/2" and DN50/2".
- **Features :** Fits multiple sizes of bracing pipe, strut, or structural steel. All steel construction. Can be mounted to all surface angles. Break off bolt head assures verification of proper installation. Design incorporates concentric attachment opening.
- **Material :** Carbon steel.
- **Finish :** Plain or electrogalvanized.



1 - When used with other Tolco® bracing products.

Universal Swivel Sway Brace Attachment - 980

Physical Data

Nominal Bracing (metric)	Pipe Size (inch)	Dimensions (mm / inch)		Max. Horiz. Design Load (kg / lbs)	Box Quantity	Box Weight (kg / lbs)	Reference		Finish
		A	B				Europe	Asia/Amer.	
DN25-DN50	1" - 2"	152.4 / 6.00	41.3 / 1.63	1254 / 2765	20	12 / 26	980100PLAIN	980	Plain
DN25-DN50	1" - 2"	152.4 / 6.00	41.3 / 1.63	1254 / 2765	20	12 / 26	980100	980EG	Electrogalvanized

Important Design and Installation Notice

Designed, tested, and approved to be used only with other Tolco® bracing products available from Viking SupplyNet®.

The Universal Swivel Sway Brace Attachment is designed to be used in conjunction with Figure 1000 Fast Clamp®, or Figure 4A pipe clamp, all joined together with bracing pipe and installed according to National Fire Protection (NFPA) 13 in order to brace pipe against sway and seismic disturbances.

The length of bracing a function of bracing size and type is defined in National Fire Protection Association (NFPA) 13.

Place bracing component into jaw fully and tighten bolt until bolt head breaks off.

A maximum 19.1 mm (3/4") diameter fastener is designed to be inserted through hole "H" and attached to the supporting structure.

The maximum horizontal design load shall not exceed 1254 kg (2765 lbs).